



 **+86 0755-237 14105**

Shenzhen Homwing Technology Co.,Ltd.

Add: E, 3/F, Building 1, Xinyuan Industrial Zone, Shangwei Park,
Guxing Community, Xixiang Street, Bao'an District, 518126 Shenzhen, China

Tel: (+86) 0755-237 14105

Fax: (+86) 0755-2371 4105

E-mail: xs@homwing.com



en.homwing.com

We reserve the right to change the specifications, dimensions, etc., as stated in this catalog without prior notice. Specifications, dimensions, etc. are subject to change without notice. Catalog data is as of August 2023.

**To manufacture the most
competitive execution parts in an
intelligent manner for industry automation**

en.homwing.com

Shenzhen Homwing Technology Co.,Ltd.



The scale and strength of the transmission components supplier, committed to build an excellent Chinese transmission brand



Company Vision

To establish itself as "a professional supplier of precision harmonic drives & electric clamping jaws with independent intellectual property rights and well-known brands"

Company Purpose

Bringing together talent, market-focused technological innovation

Company Values

We integrate consistent sentiment with our business, and through the team, encourage flexibility and innovation to achieve common goals——Build an aircraft carrier-class company!

Company Mission

Satisfy customers Successfully fulfill commitments Interdependence with customers Respect individuals, serve customers, and strive for excellence

CONTENTS

Company Introduction	01
Technology/Product Advantages	03
Full Range of Products	05
HEPG Series Modular Electric Gripper	07
HEPG-HP Series Modular Electric Gripper	15
HEPG-M Series Mini Electric Parallel Gripper	17
HEPG-L Series Long Stroke Electric Parallel Gripper	19
HLEPG Series Lithium Battery Electric Parallel Gripper	21
HERG Series Modular Electric Gripper	23
IHERG Series Lightweight Electric Rotary Gripper	27
HRG Series Robot Electric Gripper	30
HRCG Series Rotary Radial Gripper	33
HEVS Series Electric Vacuum Actuator	35
HLRA Linear Rotary Actuator	38
Torque Diagram	40
Product Application Example	41
Our Services	42

COMPANY INTRODUCTION

Shenzhen Homwing Technology Co.,Ltd., founded in 2014, is located in Shenzhen, the prosperous economic capital of China, and is committed to the research and development of high-precision transmission components. It is a high-tech enterprise integrating R & D, design, production and sales. The company has strong technical force, complete testing means and high standard quality management system. All links from raw materials to finished products are strictly supervised and controlled. It provides a solid foundation for product quality. Our products are sold all over the country and abroad.

The harmonic reducer ,electric gripper and other high-precision transmission components independently developed by the company. Under the premise of quality assurance, after being promoted to the market at discounted prices, it has been widely used and recognized by many mainstream industrial robot manufacturers both domestically and internationally, it has been used and affirmed by many mainstream industrial robot manufacturers at home and abroad. In recent years, it has made remarkable achievements in industry robots, metal machine tools, medical devices,laser processing, cutting, dispensing, printing,LED equipment manufacturing, precision electronic equipment and automation industries.

Homwing will always adhere to the purpose of "gathering talents, close to the market and technological innovation", seek the common development of the company and society, and quietly build itself into a "excellent Chinese transmission brand".

2014

Established Time

300+

Cooperative customers

50+

Production staff



The harmonic reducer ,intelligent electric transla tional gripper and other high-precision transmission components independently developed by the company.



To manufacture the most competitive execution parts in an intelligent manner for industry automation

TECHNOLOGY PRODUCT ADVANTAGES



HEPG Series Modular Electric Gripper



HEPG26-006

Adjustable Stroke:0-26mm
Clamping Force:1-6N
Weight:0.20kg
IP Grade:IP40



HEPG26-015

Adjustable Stroke:0-26mm
Clamping Force:1-15N
Weight:0.25kg
IP Grade:IP40



HEPG40-100

Adjustable Stroke:0-40mm
Clamping Force:40-100N
Weight:0.44kg
IP Grade:IP40



HEPG40-050

Adjustable Stroke:0-40mm
Clamping Force:2-50N
Weight:0.40kg
IP Grade:IP40,IP 65 Optional



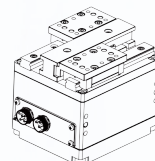
HEPG50-100

Adjustable Stroke:0-50mm
Clamping Force:40-100N
Weight:0.53kg
IP Grade:IP40



HEPG50-060

Adjustable Stroke:0-50mm
Clamping Force:2-60N
Weight:0.80kg
IP Grade:IP40



HEPG80-140

Adjustable Stroke :0-80mm
Clamping Force :50-150N
Weight :1.5Kg
IP Grade :IP40

HEPG-HP Series Modular Electric Gripper



HEPG-HP26-050

Adjustable Stroke:0-26mm
Clamping Force:5-50N
Weight :0.45kg
IP Grade:IP40



HEPG-M06-015

Stroke:6mm
Clamping Force:6/15N
Two-gear adjustable
Weight:0.20kg
IP Grade:IP20

HEPG-L Series Long Stroke Electric Parallel Gripper



HEPG-L180-350

Adjustable Stroke:180mm
Clamping Force:100-350N
Weight:3kg
IIP Grade:IP40

HLEPG Series Lithium Battery Electric Parallel Gripper



HLEPG70-500

Adjustable Stroke:0-70mm
Clamping Force:40-500N
Maximum Load: 10 kg
Weight:3kg
IP Grade: IP43

HERG Series Electric Rotary Gripper



HERG08-023

Adjustable Stroke:0-8mm
Clamping Force:4-23N
Weight:0.60kg
Peak torque:0.3N·m
Rotational speed:1500°/s
Opening/and closing time:0.2s
IP Grade:IP40



HERG32-150

Adjustable stroke: 0-32mm
Clamping force: 40-100N
Weight: 0.65kg
Peak torque: 1N·m
Rotational speed: 1500°/s
IP grade: IP40



HERG32-150T

Adjustable stroke: 0-32mm
Clamping force: 40-100N
Weight: 0.70kg
Peak torque: 1.5N·m
Rotational speed: 1000°/s
IP grade: IP40

IHERG Series Lightweight Electric Rotary Gripper



IHERG08-015

Adjustable stroke :0-8mm
Clamping force :10-15N
Weight :0.30kg
Rotational speed:1500°/s
IP grade:IP40



IHERG16-030

Adjustable stroke :16mm
Clamping force :40-70N
Weight :0.31kg
Recommended Maximum load :0.2kg
IP grade:IP40

HRG Series Robot Electric Gripper



HRG75-300

Adjustable Stroke:0-52 mm
Clamping Force:2-50 N
Maximum Recommended Load:1 kg
Weight:0.75 Kg
IP Grade:IP54



HRG75-300

Adjustable Stroke:0-75 mm
Clamping Force:40-300 N
Maximum Recommended Load:6 Kg
Weight:1.5 Kg
IP Grade:IP65

HRCG Series Rotary Radial Gripper



HRCG90-065

Adjustable Stroke:65N
Clamping Force:90mm
Maximum Recommended Load:2 kg
Weight:1Kg
IP Grade:IP40

HEVS Series Electric Vacuum Actuator



HEVS01

Suction/release time: suction:
0.10s/release: 0.10s
Recommended Maximum load:1kg
Maximum Vacuum Degree:60%
Weight:0.3kg
IP Grade:IP40

HLRA Linear Rotary Actuator



HLRA

Rated thrust:10N
Rated Torque:0.01 N·m
Maximum speed:1000 rpm
IP Grade:IP40



HEVS08


Suction/release time: suction:
0.40s/release: 0.20s
Maximum load: 4kg (load)
8kg (chassis extension)
Maximum vacuum degree: 70%
Weight: 1.4kg
Protection level: IP54

HEPG


MODULAR ELECTRIC GRIPPER

Installable On Four Sides
Networking Application
Ultra-large Stroke
Precise Force Control


*Fingers Need To Be Optional




3C Electronics




Automotive and Related Fields




Precision Manufacturing



Electric Appliance




Medical Device




Education


PRODUCT ADVANTAGES




Ultra-large Stroke




Precise Force Control




IP65 Protection Grade



Drop Detection



Grabbing Feedback



Self-lock Under Power Failure

MODEL SELECTION

Product Series	Stroke	Clamping Force	Wiring Position	Cable Fixed-end Length	Communication Mode	Power Voltage	IP Grade	Model Version (Customer Configuration)
HEPG	40	050	0	L#	CO	024	P40	A
			0-side Wiring 1-bottom Wiring	L#-default 200mm L5000-5000mm	CO-485 C1-485+I/O (NN) C2-485+I/O (PP) C3-485+I/O (NP) C4-485+I/O (PN)	024-24V		A-default B-first Upgrade C-secondary Upgrade

HEPG

HEPG26-006-1L#-C0024-P40-A

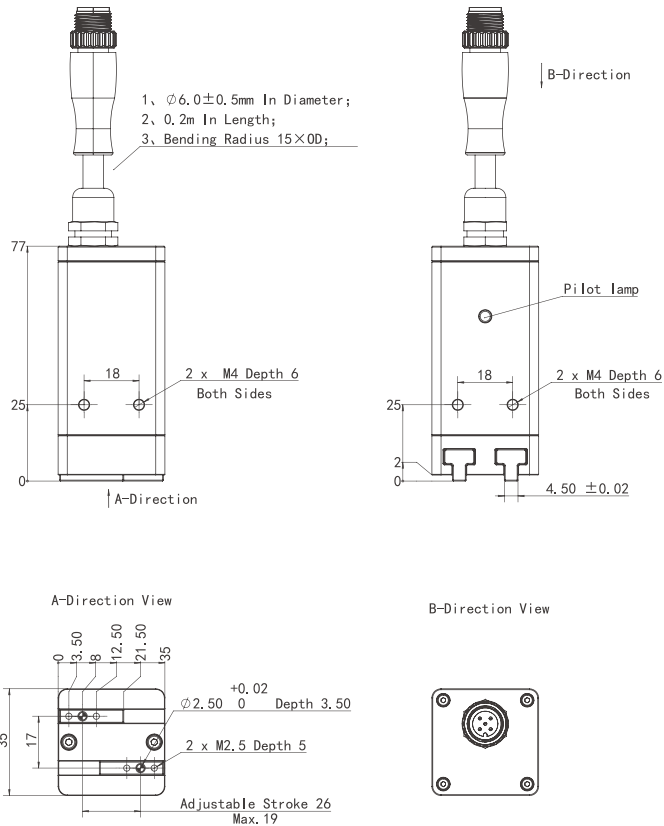
PRODUCT PARAMETERS

Adjustable Stroke	0-26 mm	Rated Voltage	DC 24±10% V
Clamping Force of One Finger	1-6 N	Maximum Current	0.85 A
Opening/Closing Time	0.25s	Rated Current	0.4 A
Positional Repeatability	±0.02 mm	Communication Protocol	Modbus RTU(RS 485)
*Maximum Recommended Load	0.1 Kg	International Standards Met	CE、RoHS
Drop Detection	Supported	Allowable Static Load in Vertical Direction Fz	100 N
Applicable Environment	5~40℃, 85% RH below	Allowable Static Torque Of The Slider Mx	0.8 N·m
Operating Noise	< 40 dB	Allowable Static Torque Of The Slider My	0.6 N·m
Weight	0.20 Kg	Allowable Static Torque Of The Slider Mz	0.5 N·m
IP Grade	IP40		

*It depends on the shape of the object to be grabbed and the friction of the contact surface. The center of gravity of the object to be grabbed will affect the load. If you have any question, please feel free to contact us.



DIMENSIONS



HEPG

HEPG26-015-1L#-C0024-P40-A



PRODUCT PARAMETERS

Adjustable Stroke	0-26 mm	Rated Voltage	DC 24±10% V
Clamping Force of One Finger	1-15 N	Maximum Current	0.85 A
Opening/Closing Time	0.3s	Rated Current	0.4 A
Positional Repeatability	±0.02 mm	Communication Protocol	Modbus RTU(RS 485)
*Maximum Recommended Load	0.3 Kg	International Standards Met	CE、RoHS
Drop Detection	Supported	Allowable Static Load in Vertical Direction Fz	150 N
Applicable Environment	5~40°C, 85% RH below	Allowable Static Torque Of The Slider Mx	1.2 N·m
Operating Noise	< 40 dB	Allowable Static Torque Of The Slider My	0.9 N·m
Weight	0.25 Kg	Allowable Static Torque Of The Slider Mz	0.55 N·m
IP Grade	IP40		

*It depends on the shape of the object to be grabbed and the friction of the contact surface. The center of gravity of the object to be grabbed will affect the load. If you have any question, please feel free to contact us.

HEPG

HEPG40-050-0L#-C0024-P40-A

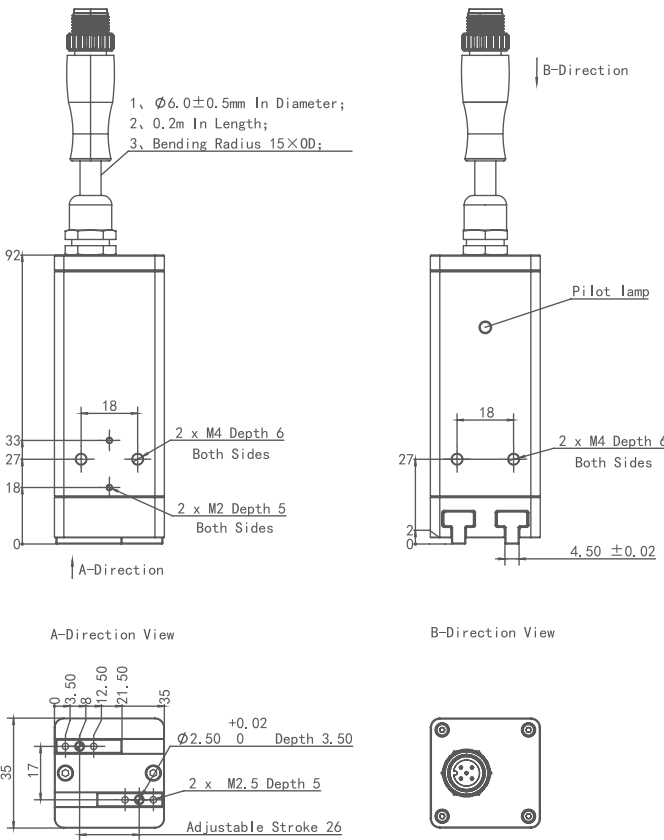


PRODUCT PARAMETERS

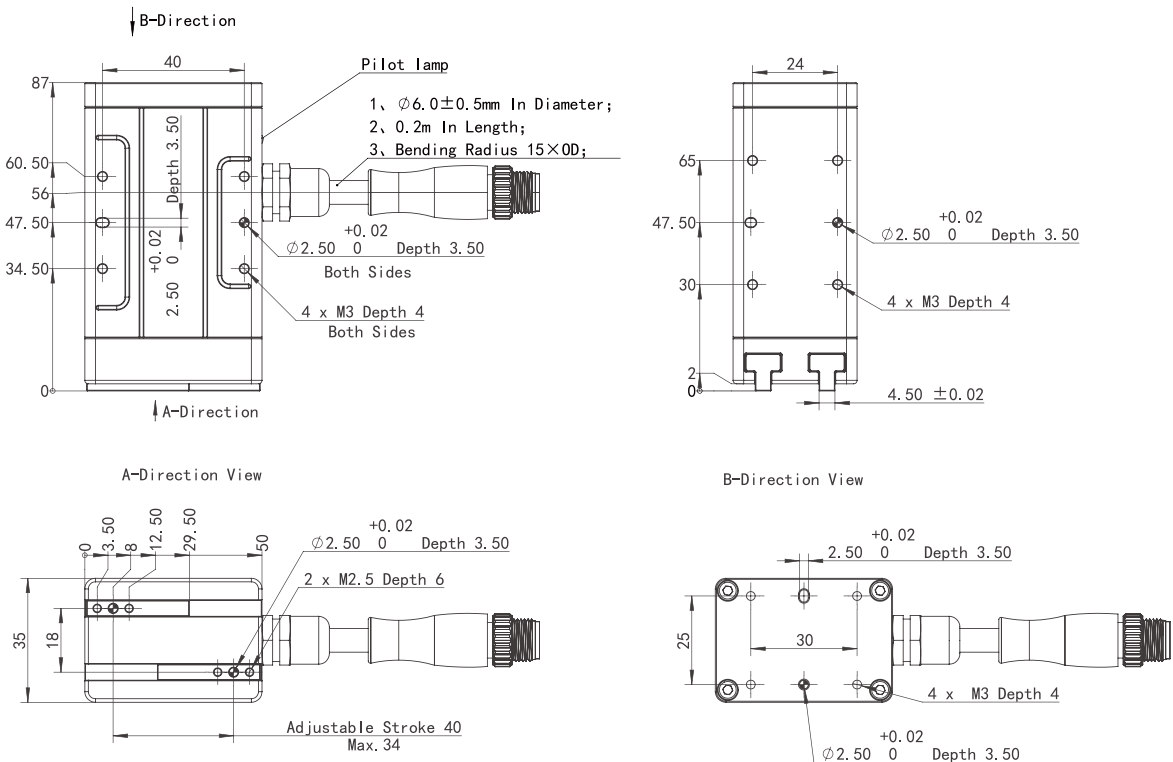
Adjustable Stroke	0-40 mm	Rated Voltage	DC 24±10% V
Clamping Force of One Finger	2-50 N	Maximum Current	0.85 A
Opening/Closing Time	0.5s	Rated Current	0.4 A
Positional Repeatability	±0.02 mm	Communication Protocol	Modbus RTU(RS 485) Digital I/O optional
*Maximum Recommended Load	0.8 Kg		
Drop Detection	Supported	International Standards Met	CE、RoHS
Applicable Environment	5~40°C, 85% RH below	Allowable Static Load in Vertical Direction Fz	200 N
Operating Noise	< 40 dB	Allowable Static Torque Of The Slider Mx	2 N·m
Weight	0.36 Kg	Allowable Static Torque Of The Slider My	1.5 N·m
IP Grade	IP40、IP65 optional	Allowable Static Torque Of The Slider Mz	2 N·m

*It depends on the shape of the object to be grabbed and the friction of the contact surface. The center of gravity of the object to be grabbed will affect the load. If you have any question, please feel free to contact us.

DIMENSIONS



DIMENSIONS



HEPG-HP

MODULAR ELECTRIC GRIPPER

High Precision
High Rigidity
Front Mounting
Networking Applications

*Fingers Need To Be Optional



To manufacture the most competitive execution parts
in an intelligent manner for industry automation

HEPG-HP

HEPG-HP26-050-OL#-C4024-P40-A

PRODUCT PARAMETERS

Adjustable Stroke	0-26 mm	Rated Voltage	DC 24±10% V
Clamping Force of One Finger	5-50 N	Maximum Current	0.6 A
Opening/Closing Time	0.35s	Rated Current	0.25 A
Positional Repeatability	±0.02 mm	Communication Protocol	Modbus RTU(RS 485) Digital I/O optional
*Maximum Recommended Load	1 Kg		
Support Drop Detection or Not	Supported	International Standards Met	CE、RoHS
Applicable Environment	5~40℃, 85% RH below	Allowable Static Load in Vertical Direction Fz	200 N
Operating Noise	< 40 dB	Allowable Static Torque of The Slider Mx	3 N·m
Weight	0.45 Kg	Allowable Static Torque of The Slider My	2.5 N·m
IP Grade	IP40	Allowable Static Torque of The Slider Mz	3.5 N·m



*It depends on the shape of the object to be grabbed and the friction of the contact surface. The center of gravity of the object to be grabbed will affect the load. If you have any question, please feel free to contact us.

PRODUCT ADVANTAGES

High Precision

High Rigidity

Installable on Five Sides

Drop Detection

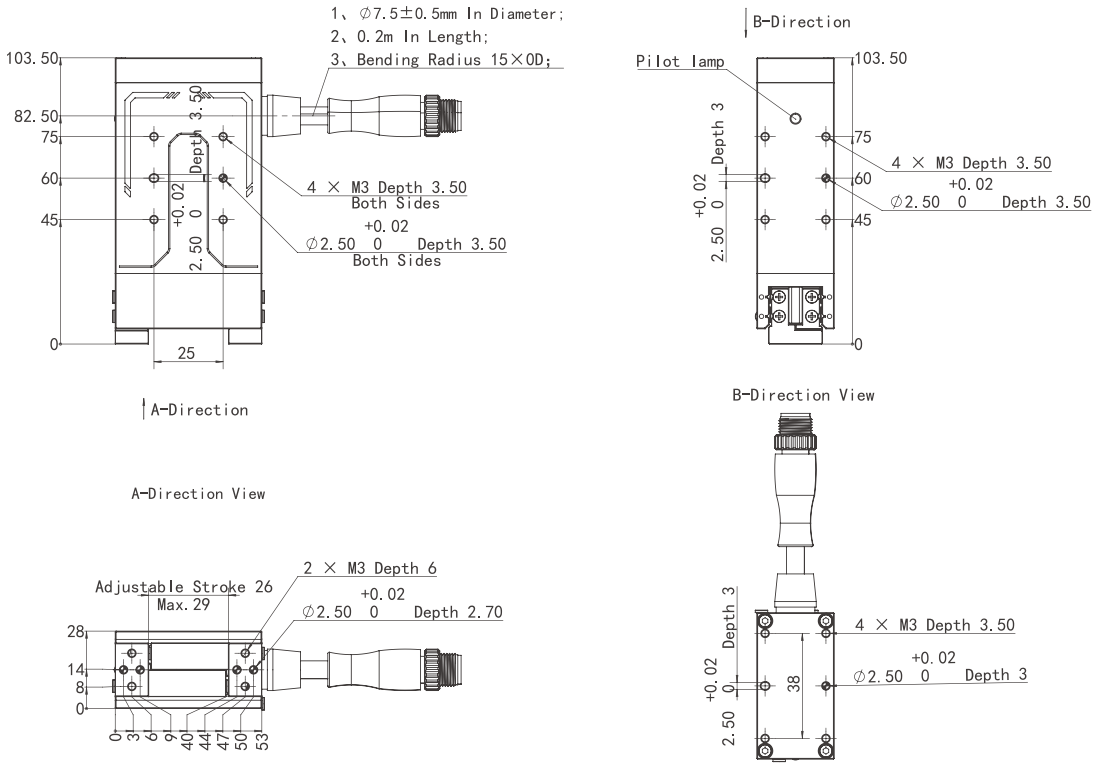
Grabbing Feedback

Network Application

MODEL SELECTION

Product Series	Stroke	Clamping Force	Wiring Position	Cable Fixed-end Length	Communication Mode	Power Voltage	IP Grade	Model Version (Customer Configuration)
HEPG-HP	26	050	0	L#	C4	024	P40	A
			0-side Wiring 1-bottom Wiring	L#-default 200mm L5000-5000mm	C0-485 C1-485+I/O(NN) C2-485+I/O(PP) C3-485+I/O(NP) C4-485+I/O(PN)	024-24V	P##	A-default B-first Upgrade C-secondary Upgrade

DIMENSIONS



HEPG-M

MINI ELECTRIC PARALLEL GRIPPER

Three-sided Installation
and Networking Application
Gripping Force Adjustable in
Two Gears

*Fingers Need To Be Optional

3C Electronics

Semiconductor

Lithium Cell

Automotive and Related Fields

Precision Manufacturing

Electrical Appliance

Medical Device

Education

To manufacture the most competitive execution parts
in an intelligent manner for industry automation

HEPG-M

HEPG-M06-015-OL#-D1024-P20-B

PRODUCT PARAMETERS

Adjustable Stroke	6 mm	Rated Voltage	DC 24±10% V
Clamping Force of One Finger	6/15 N Two-gear adjustable	Maximum Current	0.4 A
Opening/Closing Time	0.2s	Rated Current	0.2 A
Positional Repeatability	±0.02 mm	Communication Protocol	Digital I/O
*Maximum Recommended Load	0.3 Kg	International Standards Met	CE、RoHS
Drop Detection	Supported	Allowable Static Load in Vertical Direction Fz	150 N
Applicable Environment	5~40℃, 85% RH below	Allowable Static Torque of The Slider Mx	1.2 N·m
Operating Noise	< 40 dB	Allowable Static Torque of The Slider My	1 N·m
Weight	0.20 Kg	Allowable Static Torque of The Slider Mz	0.6 N·m
IP Grade	IP20		

*It depends on the shape of the object to be grabbed and the friction of the contact surface. The center of gravity of the object to be grabbed will affect the load. If you have any question, please feel free to contact us.



PRODUCT ADVANTAGES

Compact Size

Falling Detection

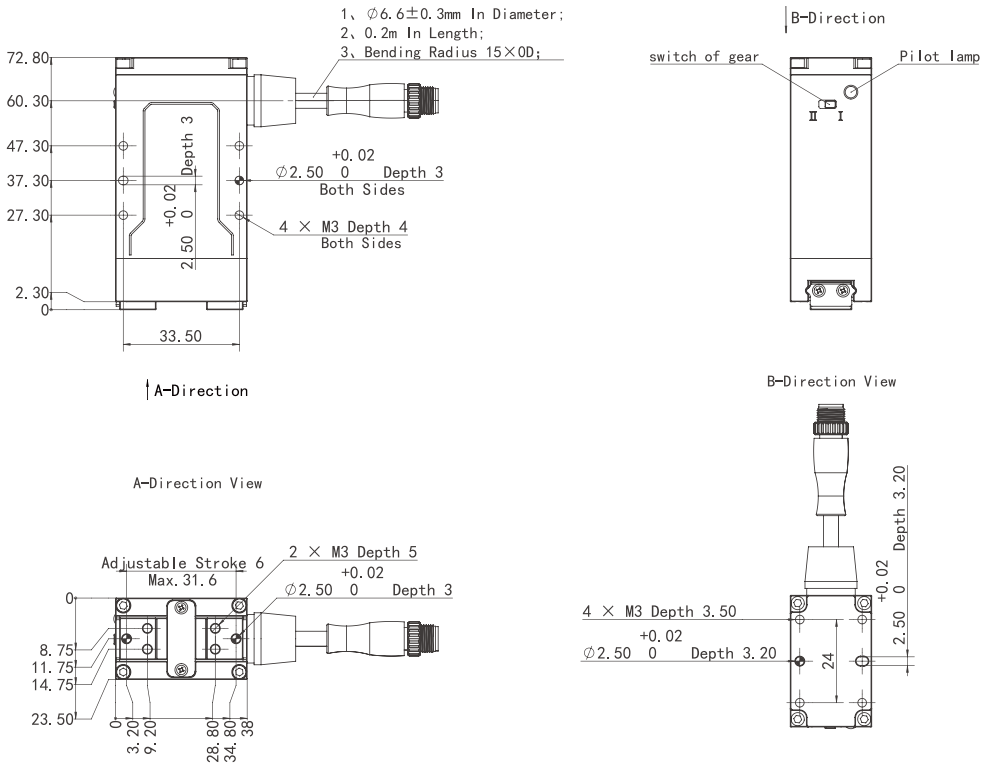
Gripping Feedback

Cost-effective

MODEL SELECTION

Product Family	Trips	Gripping Force	Outgoing Position	Length of Fixed End of Cable	Mode of Communication	Supply Voltage	IP Rating	Model Version (Configured by Customers)
HEPG-M	06	015	O	L#	D1	024	P20	A
			0-side Out 1-bottom Out	L# -200mm by Default L300-3000mm L5000-5000m	D1-I/O(NN) D2-I/O(PP) D3-I/O(NP) D4-I/O(PN)	024-24V	P##	A-default B-initial Upgrade C-secondary Upgrade

DIMENSIONS



HEPG-L

LONG STROKE

ELECTRIC PARALLEL

GRIPPER

Maintenance-Free / Ultra-Large Stroke
Power-down Holding / Falling Detection
Position Repeatability Accuracy
Industrial Protection Grade



*Fingers Need To Be Optional



Logistics



Automotive and
Related Fields



Feeding and
Unloading



Electrical
Appliance



Medical
Device

PRODUCT ADVANTAGES



Ultra-Large
Stroke



High
Rigidity



Falling
Detection



Gripping
Feedback

MODEL SELECTION

Product Family	Trips	Gripping Force	Outgoing Position	Length of Fixed End of Cable	Mode of Communication	Supply Voltage	IP Rating	Model Version (Configured by Customers)
HERG-L	180	350	O	L#	D1	024	P40	A
			0-side Out 1-bottom Out	L#-Panel insertion	D1-1/0 (NN) D2-1/0 (PP) D3-1/0(NP) D4-1/0(PN)	024-24V	P##	A-default B-initial Upgrade C-secondary Upgrade

HEPG-L

HEPG-L180-350-OL#-D1-P40-A

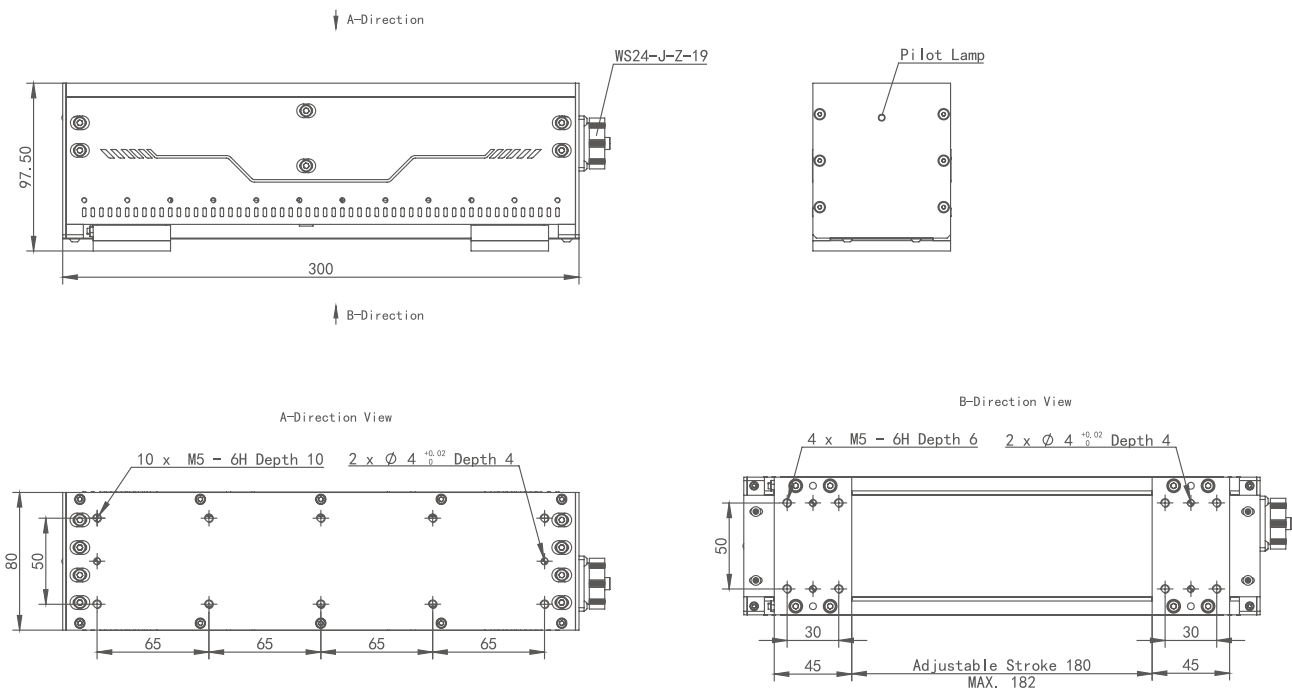
PRODUCT PARAMETERS

Adjustable Stroke	180 mm	Rated Voltage	DC 24±10% V
Clamping Force of One Finger	100-350 N	Maximum Current	2.8A
Opening/Closing Time	1 s	Communication Protocol	I/O
*Maximum Recommended Load	6 Kg	International Standards Met	CE、RoHS
Support Drop Detection or Not	Supported	Allowable Static Load in Vertical Direction Fz	1000 N
Applicable Environment	0~50 °C, 85% RH below	Allowable Static Torque of The Slider Mx	76.5 N·m
Operating Noise	< 60 dB	Allowable Static Torque of The Slider My	72.5 N·m
Weight	3 kg	Allowable Static Torque of The Slider Mz	72.5 N·m
IP Grade	IP40		

*It depends on the shape of the object to be grabbed and the friction of the contact surface. The center of gravity of the object to be grabbed will affect the load. If you have any question, please feel free to contact us.



DIMENSIONS



HLEPG

LITHIUM BATTERY ELECTRIC PARALLEL GRIPPER

Two-sided Installation and
Networking Application
Highly Integrated and
Five-fold Protection


*Fingers Need To Be Optional



Lithium Cell



Automotive and Related



Precision Manufacturing



Electrical Appliance




Medical Device




Education


PRODUCT ADVANTAGES




Very Large Load




IP43 Protection




Collision Buffering and Detection



Falling Detection



Power-down Self-locking



Easy Maintenance

MODEL SELECTION

Product Family	Trips	Gripping Force	Outgoing Position	Length of Fixed End of Cable	Mode of Communication	Supply Voltage	IP Rating	Model Version (Configured by Customers)
HLEPG	70	500	O	L5000	C5	024	P43	A
			0-side Out 1-bottom Out	L#-200mm by Default L5000-5000m	C0-485 C1-485+I/O(NN) C2-485+I/O(PP) C3-485+I/O(NP) C4-485+I/O(PN) C5-485+I/O(NN) / 485+I/O(PN)	024-24V	P##	A-default B-initial Upgrade C-secondary Upgrade

HLEPG

HLEPG70-500-OL5000-C5024-P43-A

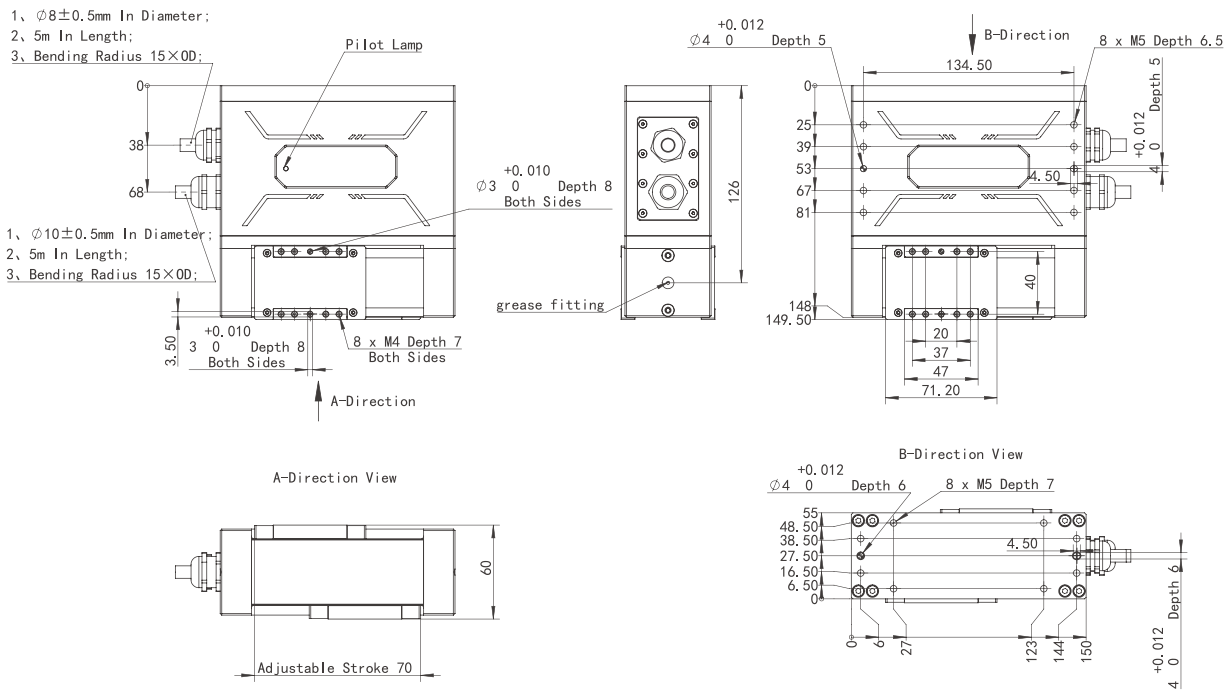
PRODUCT PARAMETERS

Adjustable Stroke	0-70 mm	Body Weight	3 Kg
Single-finger Gripping Force	40-500 N	IP Rating	IP43
Switch On/switch Off Time	0.9s	Rated Voltage	DC 24±10% V
Position Repeatability Accuracy	±0.02 mm	Maximum Current	2 A
*Maximum Recommended Load	10 Kg	Rated Current	0.6 A
Collision Buffering	Optional	Communication Protocol	Modbus RTU(RS 485) Digital I/O
Collision Detection	Support detection in X/Y/Z direction		
Falling Detection	Supported	Compliance With International Standard	CE, RoHS
Power-down Holding	Supported	Allowable Static Load in Vertical Direction Fz	1000 N
Power-off Protection	Supported	Allowable Static Torque of The Slider Mx	200 N·m
Service Environment	5~40°C,85% RH below	Allowable Static Torque of The Slider My	150 N·m
Operating Noise	<60 dB	Allowable Static Torque of The Slider Mz	150 N·m

*It depends on the shape of the object to be grabbed and the friction of the contact surface. The center of gravity of the object to be grabbed will affect the load. If you have any question, please feel free to contact us.



DIMENSIONS



HERG

HERG32-150-1L#-C0024-P40-A

PRODUCT PARAMETERS



Adjustable Stroke	0-32 mm	Operating Noise	< 70 dB
Clamping Force of One Finger	40-100 N	Weight	0.7 Kg
Opening/Closing Time	0.5s	IP Grade	IP40
Peak Torque	1 N·m	Rated Voltage	DC 24±10% V
Rated Torque	0.2 N·m	Maximum Current	4 A
Rotation Angle	Infinite rotation	Rated Current	0.5 A
Maximum Rotational Speed	1500°/s	Communication Protocol	Modbus RTU(RS 485)
Maximum Allowable Inertia	200 kgmm ²	International Standards Met	CE、RoHS
Clamping Repeatability	±0.02 mm	Allowable Static Load in Vertical Direction Fz	200 N
Rotation Repeatability	±0.5°	Allowable Static Torque of The Slider Mx	2 N·m
Maximum Recommended Load	0.5 Kg	Allowable Static Torque of The Slider My	2 N·m
Drop Detection	Supported	Allowable Static Torque of The Slider Mz	2 N·m
Applicable Environment	5~40°C, 85% RH below		

*It depends on the shape of the object to be grabbed and the friction of the contact surface. The center of gravity of the object to be grabbed will affect the load. If you have any question, please feel free to contact us.

HERG

HERG32-150T-1L#-C0024-P40-A

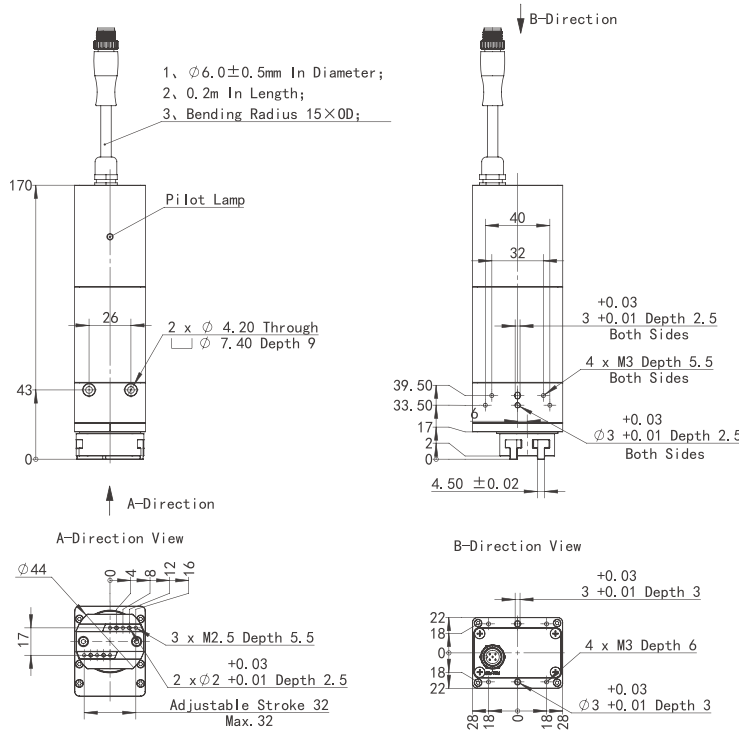
PRODUCT PARAMETERS

Adjustable Stroke	0-32 mm	Operating Noise	< 70 dB
Clamping Force of One Finger	40-100 N	Weight	0.7 Kg
Opening/Closing Time	0.5s	IP Grade	IP40
Peak Torque	1.5 N·m	Rated Voltage	DC 24±10% V
Rated Torque	0.3 N·m	Maximum Current	4 A
Rotation Angle	Infinite rotation	Rated Current	0.6 A
Maximum Rotational Speed	1000°/s	Communication Protocol	Modbus RTU(RS 485)
Maximum Allowable Inertia	200 kgmm ²	International Standards Met	CE、RoHS
Clamping Repeatability	±0.02 mm	Allowable Static Load in Vertical Direction Fz	200 N
Rotation Repeatability	±0.5°	Allowable Static Torque of The Slider Mx	2 N·m
Maximum Recommended Load	0.5 Kg	Allowable Static Torque of The Slider My	2 N·m
Drop Detection	Supported	Allowable Static Torque of The Slider Mz	2 N·m
Applicable Environment	5~40°C, 85% RH below		

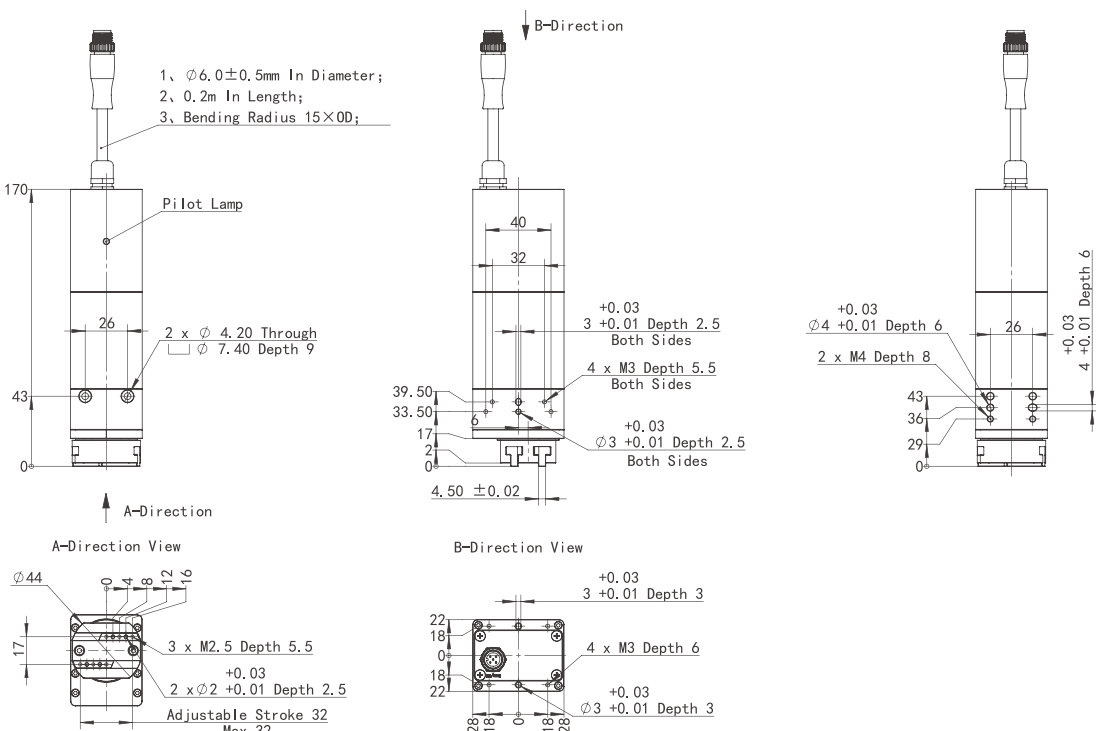
*It depends on the shape of the object to be grabbed and the friction of the contact surface. The center of gravity of the object to be grabbed will affect the load. If you have any question, please feel free to contact us.



DIMENSIONS



DIMENSIONS



IHERG

LIGHTWEIGHT ELECTRIC ROTARY GRIPPER

Stroke 8mm
Strong Compatibility
High Integration
Compact Size



*Fingers Need To Be Optional

3C Electronics

Automotive and Related Fields

Lithium Cell

Electric Appliance

Medical Device

Others

PRODUCT ADVANTAGES

Ultra-thin and Small Volume

Integrated Drive and Control

High Integration

Drop Detection

Centripetal Limbs Free Self-assembly

Power Down Hold

MODEL SELECTION

Product Series	Stroke	Clamping Force	Wiring Position	Cable Fixed-end Length	Communication Mode	Power Voltage	IP Grade	Model Version (Customer Configuration)
IHERG	08	015	1	L#	C1	024	P40	A
		0-side Wiring 1-bottom Wiring		L#- Panel Insertion Navigation	C0-485 C1-485+1/O (NN) C2-485+1/O (PP) C3-485+1/O (NP) C4-485+1/O (PN) A1-CAN2.0A+1/O (NN) A2-CAN2.0A+1/O (PP)	024-24V	P##	A-default B-first Upgrade C-secondary Upgrade

IHERG

IHERG08-015-1L#-C1024-P40-A

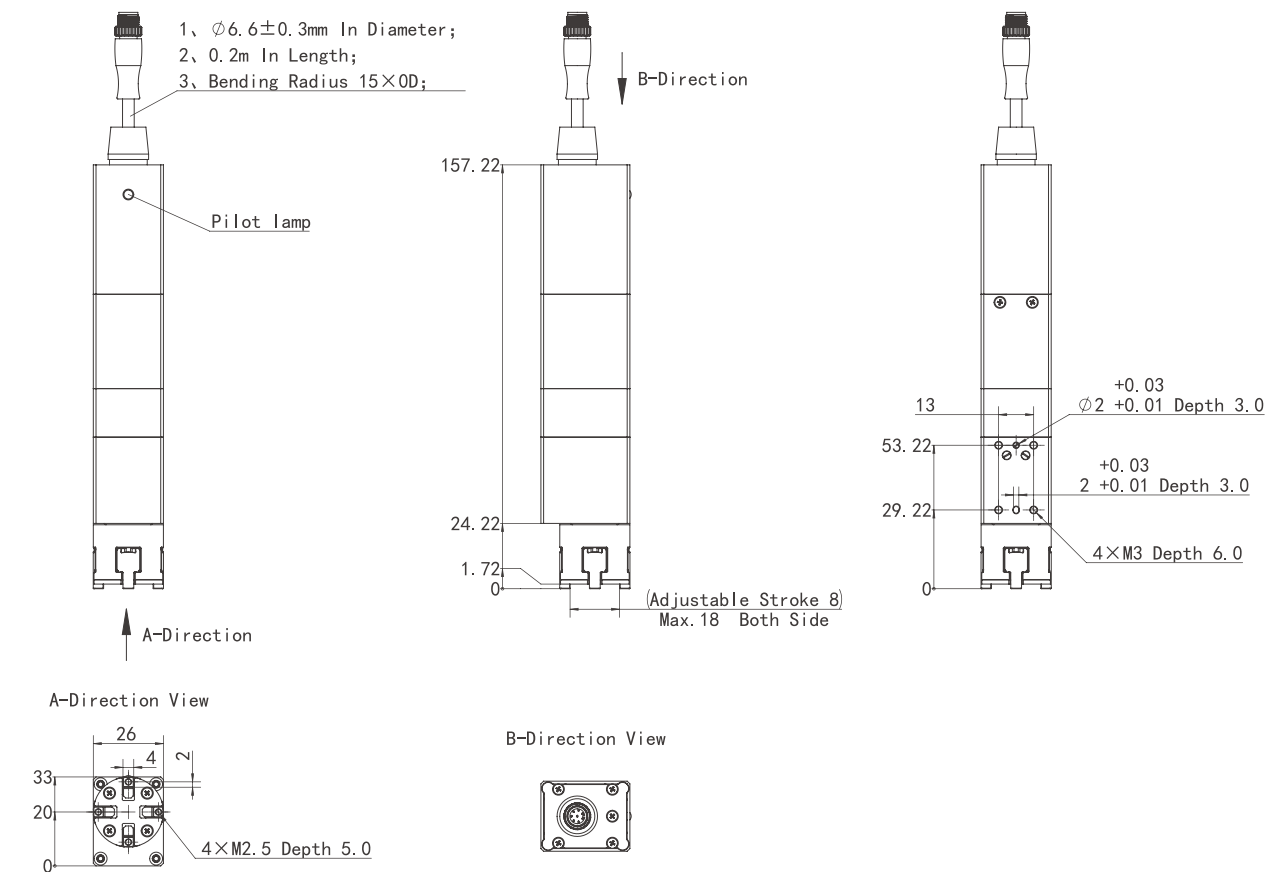
PRODUCT PARAMETERS

Gripping Force Range	10-15N	Rotational Position Accuracy	±0.5°
Total Travel	8mm	Rotation Status Feedback	have
Opening and Closing Positioning Accuracy	±0.2mm	Rated Current	0.5A
Feedback On Clamping Status	have	Maximum Current	1A (subject to actual)
Opening and Closing Time	0.3s	Communication Protocol	RS485、I/O、Can
Maximum Rotational Speed	1500°/s	Applicable Environment	5~40°C, 85% RH below
Rotational Torque Rating	0.05N.m	IP Grade	IP40
Rotational Peak Torque	0.2Nm	Operating Noise	<50dB

*It depends on the shape of the object to be grabbed and the friction of the contact surface. The center of gravity of the object to be grabbed will affect the load. If you have any question, please feel free to contact us.



DIMENSIONS



IHERG

IHERG16-030-1L#-C1024-P40-A01

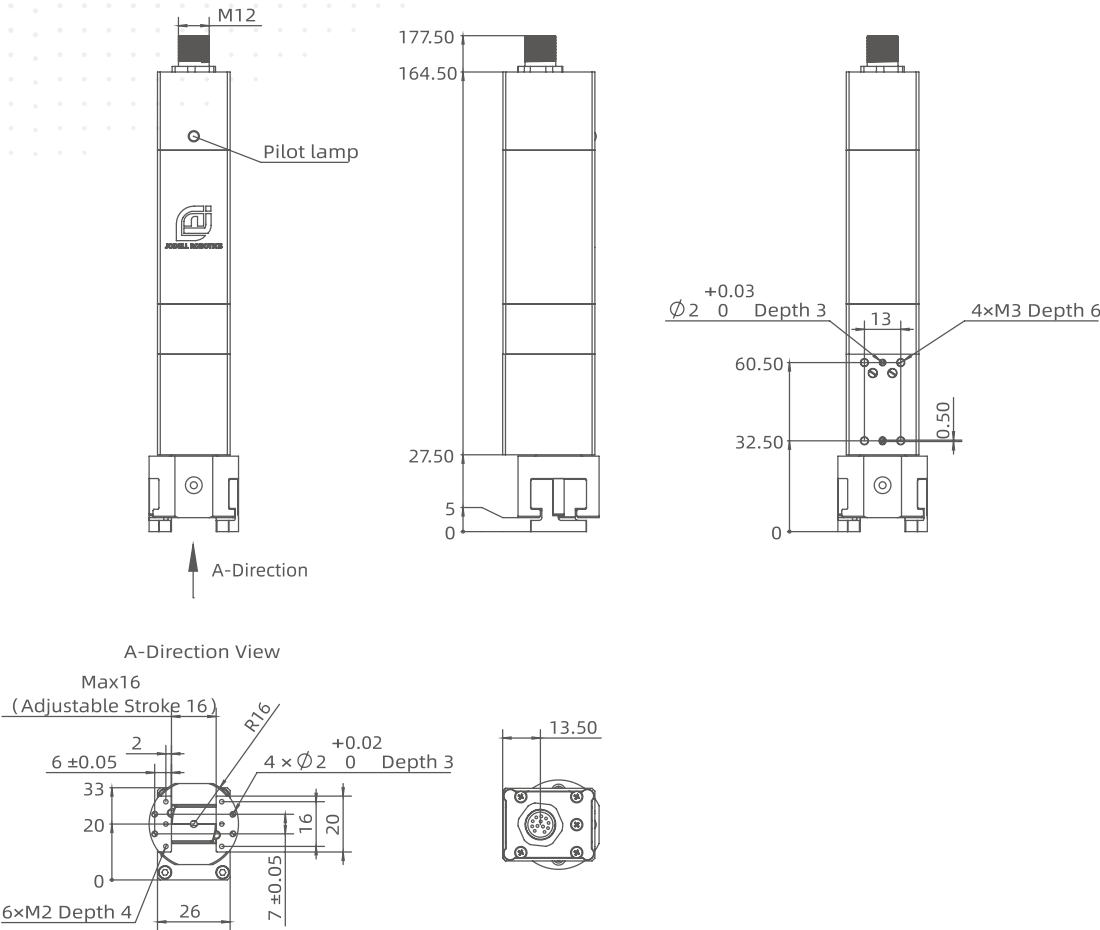


产品参数

Total Travel	16mm	Operating Noise	< 70dB
Gripping Force Range	40-70 N	Weight	0.31kg
Opening and Closing Time	0.7s	IP Grade	IP40
Rotational Position Accuracy	1.2°	Rated Voltage	24V
*Maximum Recommended Load	0.2kg	Maximum Current	1.5A
Falling Detection	Support	Rated Current	0.15A
Power-down Holding	Support	Communication Protocol	MODBUS RTU(RS485) DIGITAL I/O
Applicable Environment	5~40°C, 85% RH below		

*It depends on the shape of the object to be grabbed and the friction of the contact surface. The center of gravity of the object to be grabbed will affect the load. If you have any question, please feel free to contact us.

DIMENSIONS



HRG

ROBOT ELECTRIC GRIPPER

*Fingers Need To Be Optional

Maintenance-Free
Robot Ecology



Inspect



Package



Feeding and
Unloading



Stack



Flexible Assembly



Process change

PRODUCT ADVANTAGES



Ultra-Large
Stroke



Precise Force
Control



IP65 Protection
Grade



Drop
Detection



Gripping
Feedback



Power
Down Hold

MODEL SELECTION

Product Series	Stroke	Clamping Force	Wiring Position	Cable Fixed-end Length	Communication Mode	Power Voltage	IP Grade	Model Version (Customer Configuration)
HRG	52	050	O	L#	C3	024	P40	A
			0-side Wiring 1-bottom Wiring	L# -默认200mm L5000-5000mm	C0-485 C1-485+1/O (NN) C2-485+1/O(PP) C3-485+1/O (NP) C4-485+1/O(PN)	024-24V	P##	A-default B-first Upgrade C-secondary Upgrade

HRG

HRG52-050-OL#-C3024-P54-A

PRODUCT PARAMETERS



Adjustable Stroke	0-52 mm	IP Grade	IP54
Clamping Force of One Finger	2-50 N	Rated Voltage	DC 24±10% V
Opening/Closing Time	0.65 s	Maximum Current	0.8 A
Position Repeatability Accuracy	±0.02 mm	Rated Current	0.5A
*Maximum Recommended Load	1 Kg	Communication Protocol	Modbus RTU (RS 485) Digital I/O
Support Drop Detection or Not	Supported	International Standards Met	CE、RoHS
Power-down Holding	Supported	Allowable Static Load in Vertical Direction Fz	1000 N
Applicable Environment	5~40 °C, 85% RH below	Allowable Static Torque of The Slider Mx	76.5 N·m
Operating Noise	< 40 dB	Allowable Static Torque of The Slider My	72.5 N·m
Weight	0.75 Kg	Allowable Static Torque of The Slider Mz	72.5 N·m

*It depends on the shape of the object to be grabbed and the friction of the contact surface. The center of gravity of the object to be grabbed will affect the load. If you have any question, please feel free to contact us.

HRG

HRG75-300-OL#-C0024-P65-A

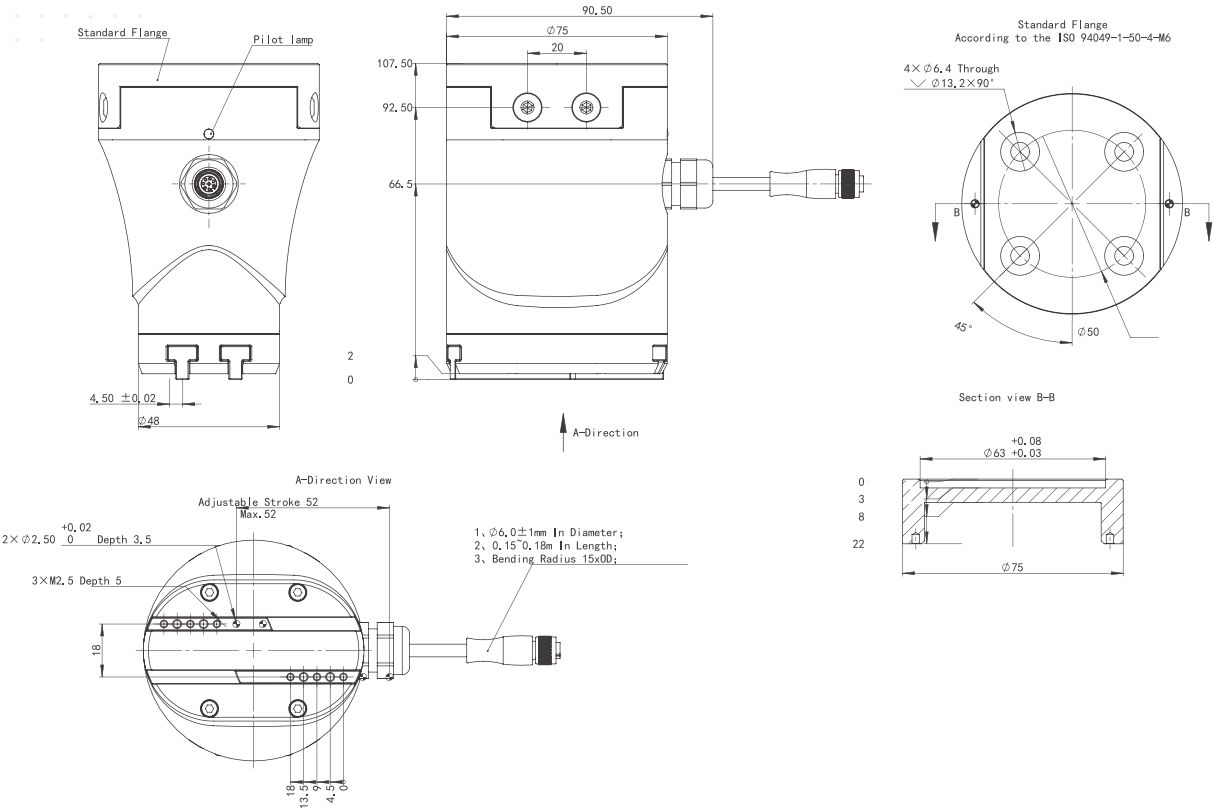
PRODUCT PARAMETERS



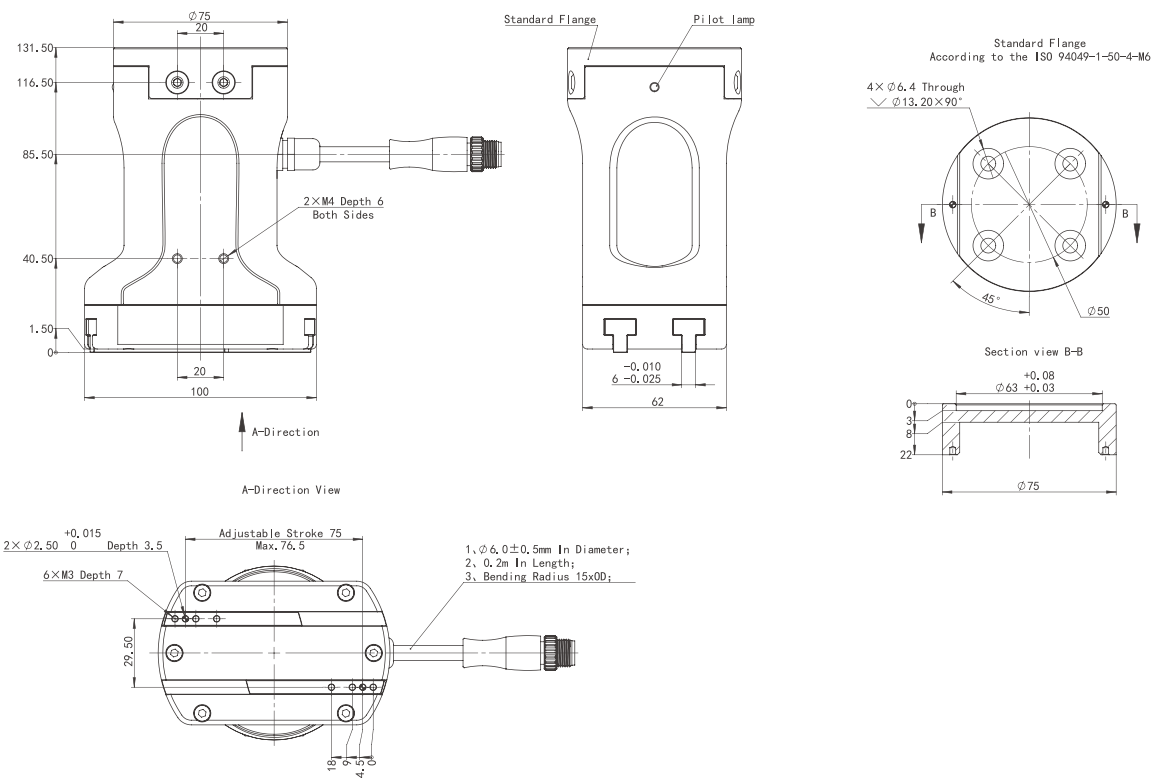
Adjustable Stroke	0-75 mm	IP Grade	IP65
Clamping Force of One Finger	40-300 N	Rated Voltage	DC 24±10% V
Opening/Closing Time	0.55 s	Maximum Current	1.5 A
Position Repeatability Accuracy	±0.02 mm	Rated Current	0.55 A
*Maximum Recommended Load	6 Kg	Communication Protocol	MODBUS RTU(RS 485)
Support Drop Detection or Not	Supported	International Standards Met	CE、RoHS
Power-down Holding	Supported	Allowable Static Load in Vertical Direction Fz	400 N
Applicable Environment	5~40 °C, 85% RH below	Allowable Static Torque of The Slider Mx	8 N·m
Operating Noise	< 40 dB	Allowable Static Torque of The Slider My	8 N·m
Weight	1.5 Kg	Allowable Static Torque of The Slider Mz	8 N·m

*It depends on the shape of the object to be grabbed and the friction of the contact surface. The center of gravity of the object to be grabbed will affect the load. If you have any question, please feel free to contact us.

DIMENSIONS



DIMENSIONS



HRCG

ROTARY RADIAL GRIPPER

Three-Finger Radial Grabbing
Large Stroke Suitable For
Objects With Different Diameters



3C
Electronics



Automotive and
Related Fields



Precision
Manufacturing



Electric
Appliance



Medical
Device



Education

PRODUCT ADVANTAGES



Ultra-Large
Stroke



IP40 Protection
Grade



Gripping
Feedback



Power
Down Hold

MODEL SELECTION

Product Series	Stroke	Clamping Force	Wiring Position	Cable Fixed-end Length	Communication Mode	Power Voltage	IP Grade	Model Version (Customer Configuration)
HRCG	90	065	0	L#	CO	024	P40	A
			0-side Wiring	L# -默认200mm L5000-5000mm	CO-485	024-24V		A-default B-first Upgrade C-secondary Upgrade

HRCG90-065

RCG90-065-0L#-C0024-P40-A

To manufacture the most competitive execution parts
in an intelligent manner for industry automation

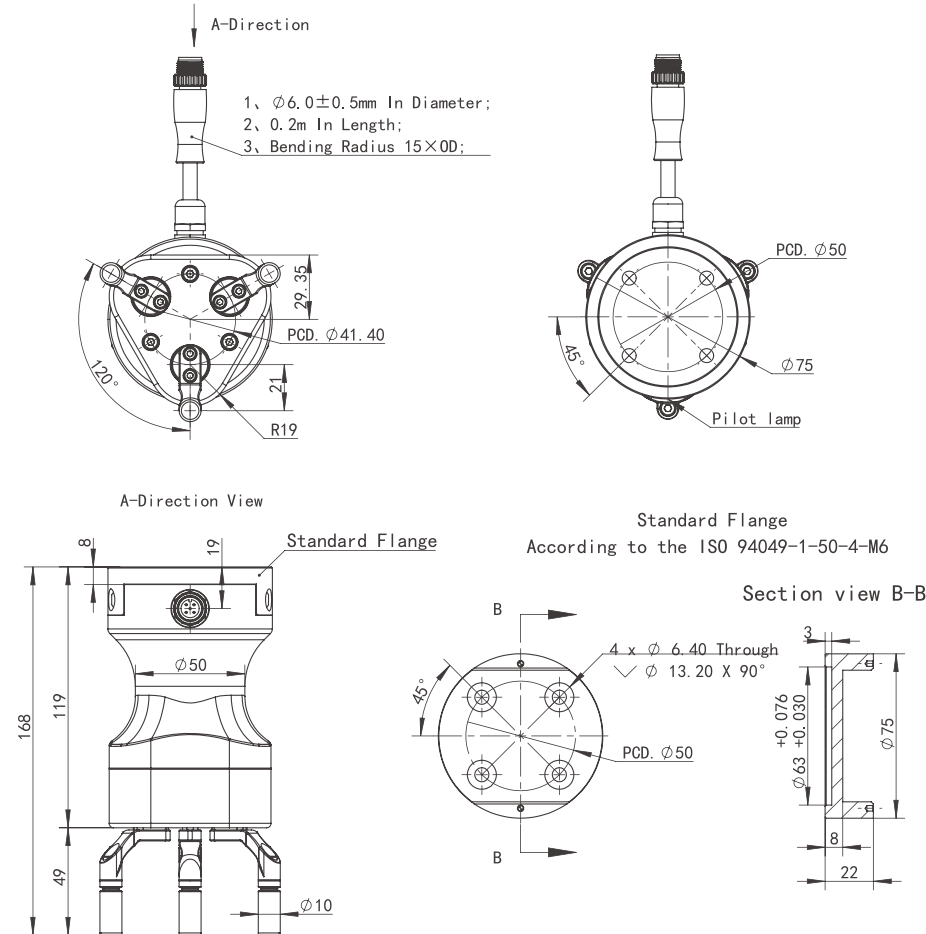
PRODUCT PARAMETERS

Adjustable Stroke	65N	Weight	1Kg
Recommended maximum clamping diameter	90mm	IP Grade	IP40
Position Repeatability Accuracy	±0.02 mm	Rated Voltage	DC 24±10 V
*Maximum Recommended Load	2 kg	Maximum Current	1.5 A
Power-down Holding	Supported	Rated Current	0.45 A
Applicable Environment	5-40°C, 85% RH below	International Standards Met	CE、RoHS
Operating Noise	< 40 dB	Communication Protocol	Modbus RTU(RS485)

*It depends on the shape of the object to be grabbed and the friction of the contact surface. The center of gravity of the object to be grabbed will affect the load. If you have any question, please feel free to contact us.



DIMENSIONS



HEVS

ELECTRIC VACUUM ACTUATOR

Air-source-saving System
Easy-to-use
Easy-to-install
Programmable Control

* Suction Cup Head Is Optional



3C
Electronics



Automotive and
Related Fields



Precision
Manufacturing



Electric
Appliance



Medical
Device



Education

HEVS

HEVS01-1L#-C1024-P40-A

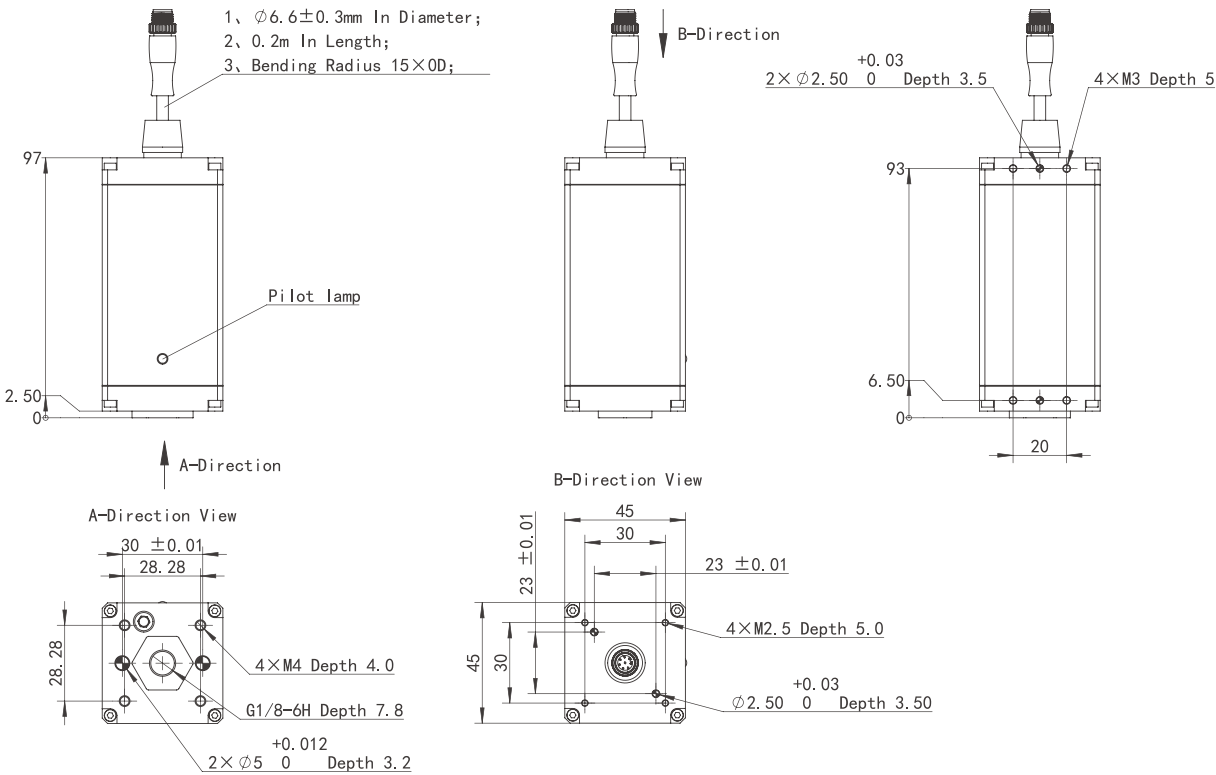
PRODUCT PARAMETERS

Vacuum Degree	10%-60%	Operating Noise	< 70dB
Maximum Flow	2.5 L/min	Rated Voltage	DC 24±10% V
Body Weight	0.3kg	Rated Current	0.13 A
*Maximum Recommended Load	1kg	Peak Current	0.3 A
Fastest Adsorption Time	0.1s	Compliance With International Standards	CE、RoHS
Fastest Release Time	0.1s	Communication Protocol	Modbus RTU(RS485) Digital I/O
Degree of Protection	IP40		
Service Environment	0~40°C, 85% RH below		

*It depends on the shape of the object to be grabbed and the friction of the contact surface. The center of gravity of the object to be grabbed will affect the load. If you have any question, please feel free to contact us.



DIMENSIONS



PRODUCT ADVANTAGES



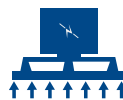
IP40 Protection
Level



Drop Detection



Grabbing
Feedback



Power-off
Protection

MODEL SELECTION

Product Series	Load	Wiring Position	Cable Fixed-end Length	Communication Mode	Power Voltage	IP Grade	Model Version (Customer Configuration)
HEVS	08	O	L#	C1	024	P40	A
		0-side Wiring	L#-default 200mm L5000-5000mm	C0-485 C1-485+I/O(NN) C2-485+I/O(PP) C3-485+I/O(NP) C4-485+I/O(PN)	024-24V		A-default B-first Upgrade C-secondary Upgrade

HLRA

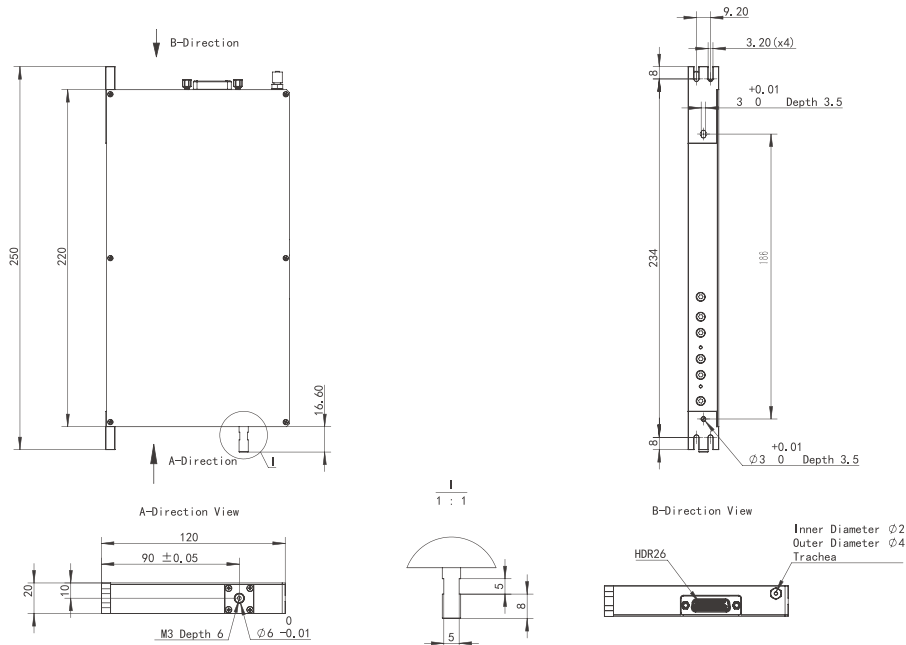
HLRA15-20/25-20/40-20

PRODUCT PARAMETERS



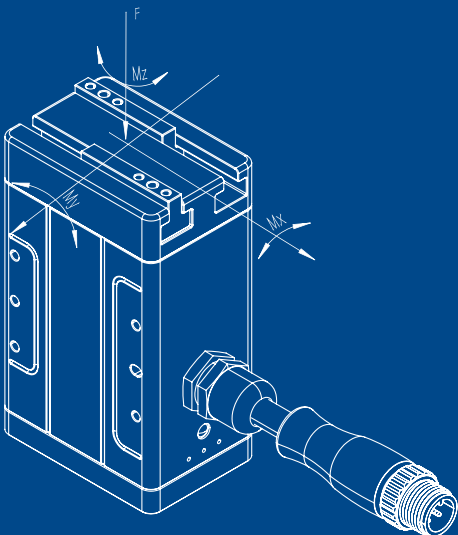
Parameter Category	Model No.	HLRA15-20	HLRA25-20	HLRA40-20
L-axis	Adjustable Stroke	15mm	25mm	40mm
	Rated Thrust	10N	10N	10N
	Peak Thrust N	35N	35N	35N
	Thrust Constant	11.4 N/A	11.4 N/A	11.4 N/A
	Rated Current	0.87A	0.87A	0.87A
	Peak Current	3.1A	3.1A	3.1A
	Linear Encoder Resolution	0.2μm	0.2μm	0.2μm
	Position Repeat Positioning Accuracy	±1um	±1um	±1um
Force Control Accuracy	20~50g	±3g	±3g	±3g
	50~200g	±10g	±10g	±10g
R-axis	Rotary Stroke	±180°	±180°	±180°
	Rotary Encoder Resolution	17 bits	17 bits	17 bits
	Rotational Positioning Accuracy	±0.02°	±0.02°	±0.02°
	Rated Torque	0.01 N·m	0.01 N·m	0.01 N·m
	Peak Torque	0.043 N·m	0.043 N·m	0.043 N·m
	Rated Current	0.34A	0.34A	0.34A
	Peak Current	1.2A	1.2A	1.2A
	Radial Runout	±5μ	±5μ	±5μ
Ontology Parameters	Voltage	DC 24±10%	DC 24±10%	DC 24±10%
	Service Environment	5-40°	4A	4A
	Body Weight	0.60 Kg	0.80 Kg	1.00 Kg

DIMENSIONS

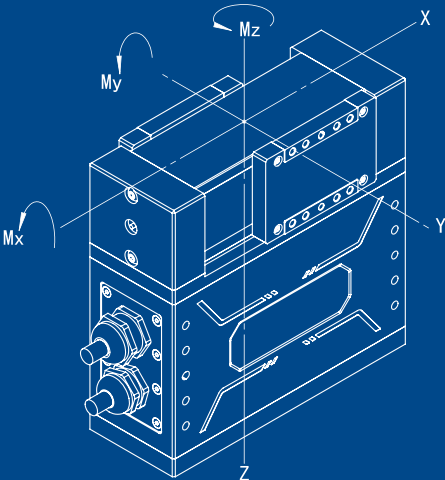


TORQUE DIAGRAM

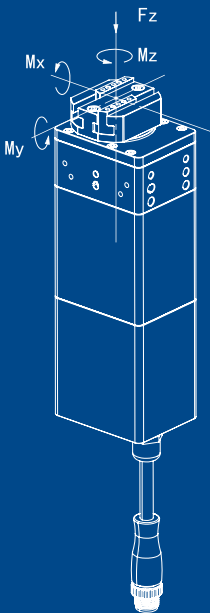
HEPG Series Torque Diagram



HLEPG Series Torque Diagram



HERG Series Torque Diagram



PRODUCT APPLICATION EXAMPLE

1

Medical automation equipment

The micro drive control integrated electric gripper and rotation-clamping-integrated electric servo gripper independently developed by Homwing for the in-vitro diagnosis and laboratory automation equipment have been applied in several testing automation equipment. The compact and integrated structure can greatly simplify the tedious integrated design of previous clamping device. Functions such as drop detection, grabbing feedback and self-lock under power failure make the equipment more intelligent.

2

Lithium battery automation equipment

There are several scenarios requiring the loading and unloading by robots in the PACK production process of power battery. Homwing has developed heavy-duty modular electric gripper for this scenario which boasts adjustable and controllable torque, speed and position and the outstanding performances including self-lock under power failure, ultra-large stroke, drop detection and grabbing feedback. Meanwhile, the design of installable on three sides provides better suitability.

3

3C spare part assembly and testing

In 3C field with extremely high appearance requirements for parts clamping, Homwing has designed and developed electric grippers more suitable for irregular parts, which own the functions and characteristics of high frequency and high precision, making the clamping of spare parts in 3C field more easier.

4

Packaging automation equipment

In the packaging fields such as food packaging and medicine packaging, due to the need of maintaining the intact packaging, there is an accurate force control requirement for the clamping equipment. In the frequent usage scenarios, the clamping function is required to be stable. Therefore, Homwing's modular electric gripper can perfectly meet the clamping requirement in the packaging industry and provide excellent solutions for the industry.

To manufacture the most competitive execution parts in an intelligent manner for industry automation

OUR SERVICES

We are not only a product supplier but also your service expert.

We are committed to providing you with comprehensive and product & market-oriented services in the life cycle of each product and make continuous improvement and optimization based on your opinions.

Offline service+ online service

Please call our hotline or visit our company to obtain the required product materials or services. If necessary, our experienced service personnel are also willing to provide on-site expert consultation and service.

You can also follow our social media account to learn more about the products and services.



Official website



Wechat



Video account



Tik Tok

Service contract

We provide corresponding service contracts for you to ensure that we can provide technical support for you in case of any failure, thus facilitating you to make long-term plans for the product.

Spare parts

We understand all spare parts required for the products and will provide you with cost-effective and high-quality spare parts based on professional consultation.

